



## HARDING STEEL, INC. SUV and SUV XL INSTRUCTION MANUAL



**READ ENTIRE MANUAL BEFORE OPERATING THE SUV PARKING LIFT. IF ANY QUESTIONS ARISE AS TO THE SAFETY OR OPERATIONS OF THE SUV-LIFT ASK FIRST. CONTACT YOUR PROPERTY MANAGER, BUILDING ENGINEER, YOUR LOCAL SUV-LIFT DEALER OR CALL (800) PARK-DBL (800 727-5325). THE SUV-LIFT IS NOT A TOY, THE UTMOST CAUTION SHOULD BE USED AT ALL TIMES WITH THE SUV-LIFT. NEVER ALLOW CHILDREN OR INTOXICATED INDIVIDUALS TO USE THE SUV-LIFT. SERIOUS INJURY, PROPERTY DAMAGE, AND/OR DEATH CAN OCCUR IF SUV-LIFT IS IMPROPERLY USED.**

### OPERATION OF THE SUV-LIFT

#### PRE-LIFTING STAGE

NOTE: Your SUV-Lift in most indoor installations will be set for particular vehicles on the top and the bottom. Your lift is set for cars on the upper platform that do not exceed \_\_\_\_\_ inches in height..

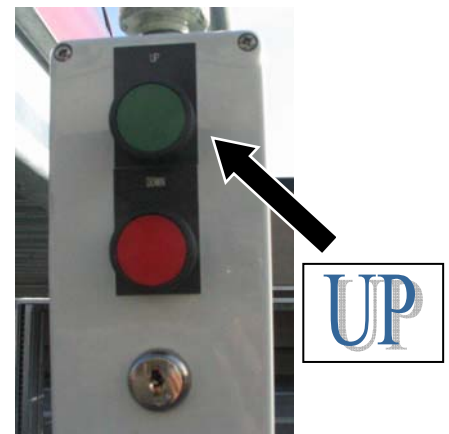
1. Drive top vehicle onto the elevating pan. Vehicles may be driven in nose first or backed in.
2. Drive until the top vehicle's foremost tires drop into the wheel well or rest against the wheel stop (if pulling on forward, this will be the front tires, if pulling in backwards, this will be the rear tires).
3. Turn off car engine, engage safety brake, and place the vehicle's gear selector in **Park**. If vehicle is manual shifting, be sure the transmission is in gear.
4. Check the front of the SUV-Lift to make sure that the vehicle's forward tires are securely set in the wheel well or safely rest against the wheel stop.



5. Walk around SUV-Lift to ensure nothing is placed on or near the elevating pan.
6. Position yourself in front of the lift within reach of the operating switch/key lock..

#### LIFTING STAGE

1. Once all precautions of the Pre-Lifting Stage (above) are followed, check around SUV-Lift to ensure that no objects are in platform's way, and that no person (except the operator who will be operating the SUV-Lift) are within 10 feet. Next, turn the key lock (or push the button) to the up position to engage the hydraulic power pack. As a safeguard, the button or key must be engaged at all times during the raising and lowering of the SUV-Lift. This ensures your complete attention to the surroundings and to the operation of the SUV-Lift. If the button or key is released, the SUV-Lift will automatically stop, hydraulically locked in that position. This locking mechanism is temporary in nature; over time the hydraulic locks will slowly allow the elevating pan to lower unless the mechanical locks are engaged.



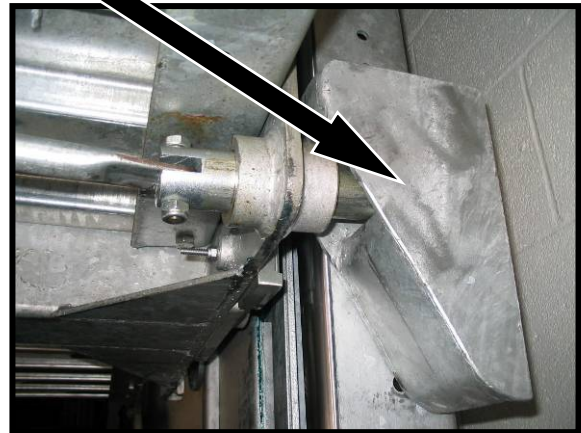


**NEVER leave the lift unattended  
when it is partially raised or lowered**

2. Keep button pushed or the key lock turned to the up position until the elevating pan reaches its top custom-set position. Observe that the locking mechanism snaps into the steel blocks on each side of the lift as the lift reaches its upper most position.

**NOTE:** During elevation, observe the perimeter of SUV-Lift to ensure that there is no interference.

3. Once top position is reached, press the down button (or move the key lock to the down position) to lower the elevating pan onto the mechanical locks. Keep the button or key pushed until the elevating pan is resting securely on the mechanical locking pins. If the mechanical locks are not properly engaged, the elevating pan will lower to the floor.
4. Walk around, never under, the SUV-Lift to ensure that both mechanical locks are engaged.

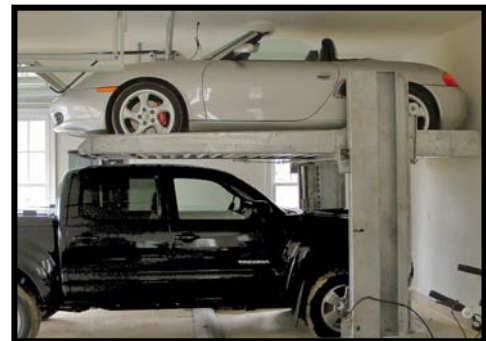


**CAUTION**

**IF ELEVATING PAN IS NOT RESTING SECURELY ON THE MECHANICAL LOCKS, THE BOTTOM VEHICLE, PERSONS OR OTHER OBJECTS CAN BE INJURED OR DAMAGED. HARDING STEEL ASSUMES NO RESPONSIBILITY FOR DAMAGE TO PERSONS OR PROPERTY DUE TO THE TOP ELEVATING PLATFORM NOT BEING PROPERLY LOWERED ONTO THE MECHANICAL LOCKS. IF THE MECHANICAL LOCKS ARE DAMAGED OR NOT OPERATING PROPERLY, DO NOT USE THE SUV-LIFT UNTIL A CERTIFIED TECHNICIAN HAS REPAIRED THIS PROBLEM.**

**PLACEMENT OF LOWER VEHICLE**

1. Once all the precautions of the Pre-Lifting and Lifting Stage have been followed, drive the lower vehicle under the elevating pan until the forward tires reach the custom set wheel bar, or, to the location where the car is properly positioned under the lift to allow clearance of the doors and mirrors. The setting of the lift determines the height of the vehicles that can be safely parked underneath the lift. Make sure that you are using only vehicles that are of the proper height to work for this setting. If the setting of your lift needs to be changed, contact your dealer of Harding Steel.



2. Turn off the engine, set the parking brake and place in the gear selector in **Park**, or place a manual transmission in gear.



**HARDING  
S T E E L**

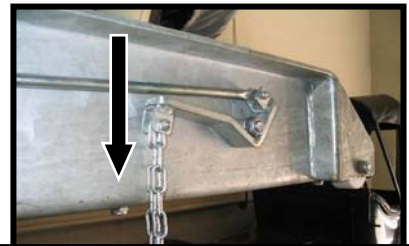
## REMOVAL OF LOWER VEHICLE

1. Drive out the lower vehicle and make sure it is well clear of the SUV-Lift before lowering the elevating pan.

## LOWERING THE LIFT

1. Walk around SUV-Lift to make sure nothing is below or near the elevating pan's footprint for descent. Be certain that no person (except the person who will be running the SUV-Lift) is within 10 feet of the moving SUV-Lift.

2. Pull **down** the lock release lever at the front of elevating pan. This lever is spring loaded and has a white plastic wheel at one end. (see picture at right)



Pull Down to Release Locks

3. Move back to the control button or key lock switch. Next, turn the key lock to on position. Push the UP button. This will elevate the pan enough to release the mechanical locking mechanism. The mechanical locks will "pop inward" and are now disengaged. (



Up Button to Release Locks

4. Press the down button to lower the elevating pan.



Down Button to Lower Lift



**NOTE: Never place any object or any part of your body on the legs or any other part of SUV-Lift during operation. Serious injury or death can occur.**

5. When lowering the SUV-Lift always be watchful for objects, persons, or animals that may go under the elevating pan during operation.
6. Once the elevating pan descends to the ground, the lock release lever should automatically reset. If not, call your SUV-Lift representative to adjust this lock release.
7. Carefully, drive the top vehicle off of the elevating pan.

## Other Operating Tips and Suggestions:

1. Do not raise the elevating pan when the lift is empty. The lifts are designed to be lowered with the weight of the car on the platform. It may take an inordinate amount of time to lower an empty lift.
2. Do not place anything on the corners of the lift platform that may interfere with the clear operation of the lock release mechanism.



**HARDING**  
**S T E E L**

## **PHONE NUMBERS**

For Service or Technical assistance with the operation of your parking lift:  
Harding Steel's National Corporate Office:

**800-PARK-DBL**  
**800-878-7888**